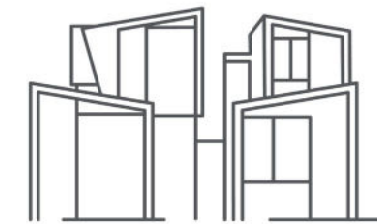


SITE

UNIT 9
PHASE 2



PINE VALLEY VILLAS

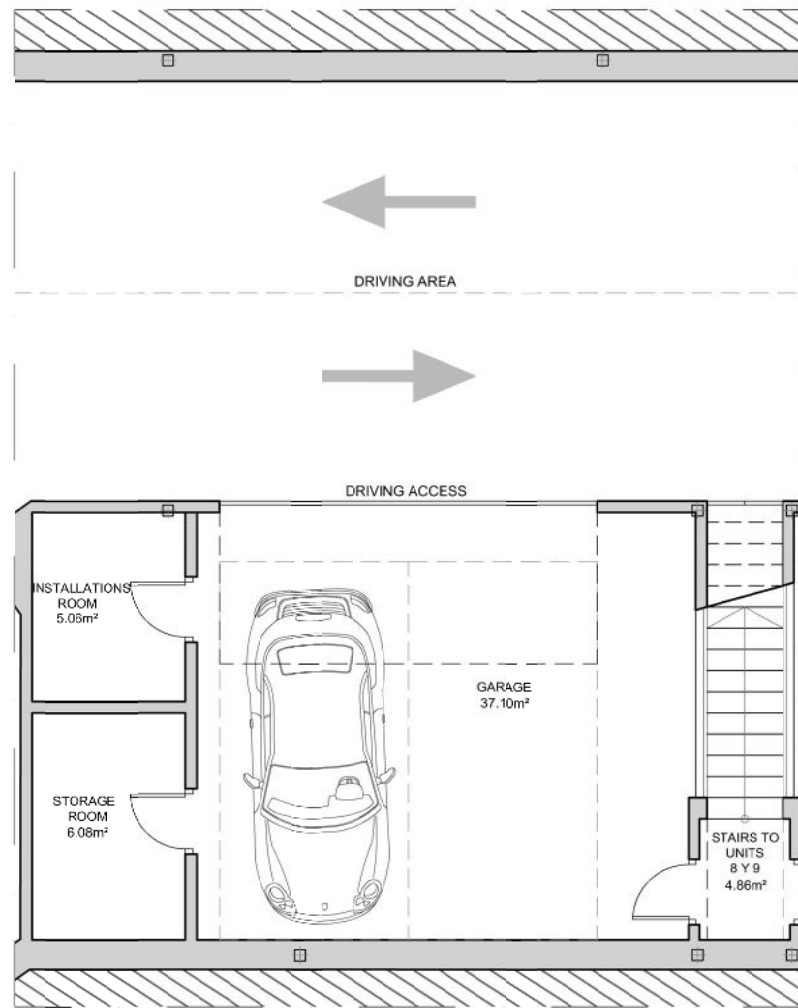
BY RH PRIVÉ

Urb. Reserva del Higuero
Avda. del Higuero S/N - Complejo Rivera
Casa N°1 - 29639 Benalmádena (Málaga)
Tel. (+34) 952 569 094
Mvl. (+34) 669 404 390
ventas@reservadelhigueronprive.com
www.reservadelhigueronprive.com

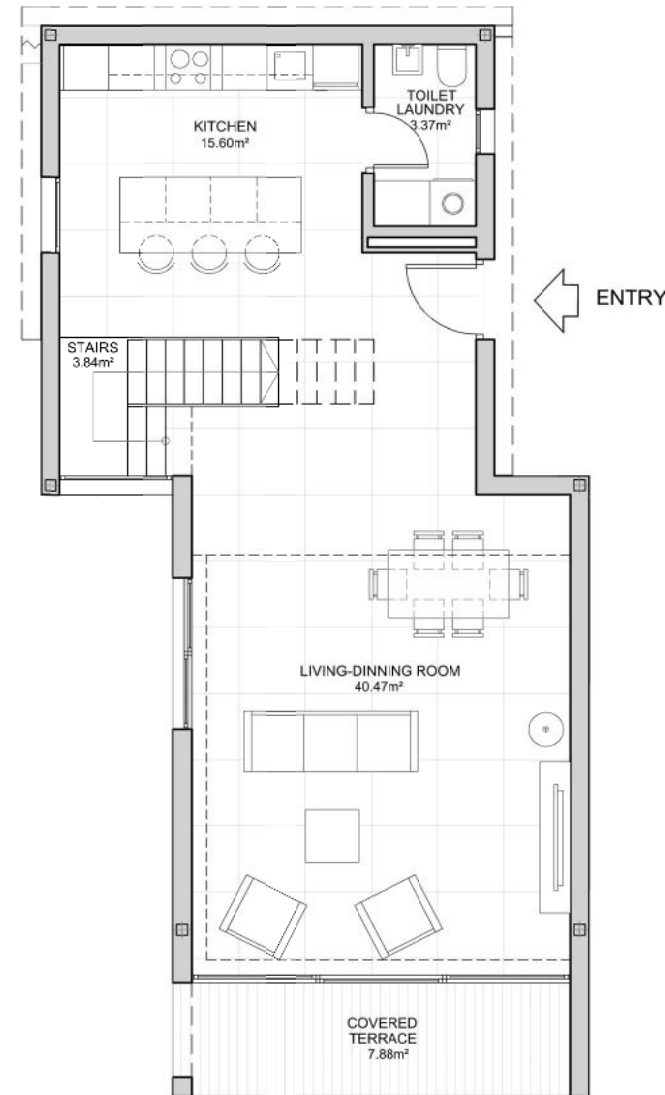
UNIT	TYPOLOGY	LEVEL			TERRACE	GARDEN	SWIMMING POOL AREA	TOTAL BUILT-UP AREA
		BASEMENT	GROUND FLOOR	TOP FLOOR				
9	CENTRAL	55,61	72,65	72,5	84,33	79,44	21,97	386,5

The expressed surfaces, the dimensioning of pillars, the situation of downpipes and ventilation ducts may undergo slight variations during the execution of the work due to technical, legal or municipal requirements. Some door swings and the distribution of sanitary appliances on the kitchen may undergo some variation. The overhang of the kitchen countertops is in the choice of custom specifications. The furniture is merely informative and the materials will be those represented in the specifications.

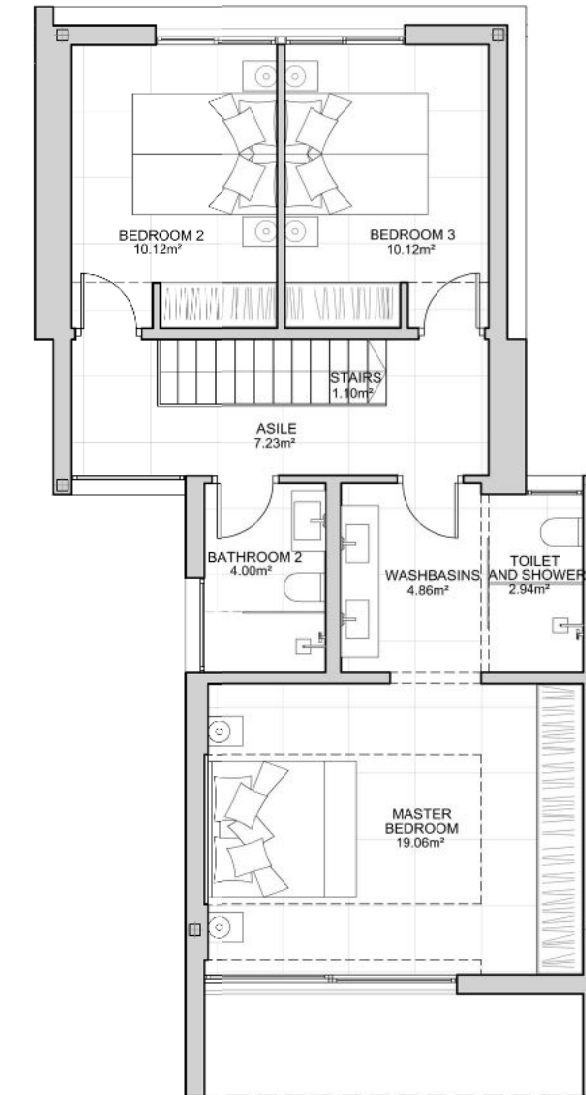




PARKING AND STORAGE ROOM

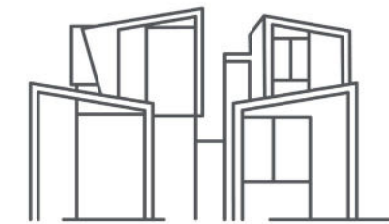


GROUND FLOOR



TOP FLOOR

UNIT 9
PHASE 2



PINE VALLEY VILLAS

BY RH PRIVÉ

Urb. Reserva del Higuierón
Avda. del Higuierón S/N - Complejo Rivera
Casa Nº1 - 29639 Benalmádena (Málaga)

Tel. (+34) 952 569 094
Mvl. (+34) 669 404 390

ventas@reservadelhigueronprive.com
www.reservadelhigueronprive.com

UNIT	TYPOLOGY	LEVEL			TERRACE	GARDEN	SWIMMING POOL AREA	TOTAL BUILT-UP AREA
		BASEMENT	GROUND FLOOR	TOP FLOOR				
9	CENTRAL	55,61	72,65	72,5	84,33	79,44	21,97	386,5

The expressed surfaces, the dimensioning of pillars, the situation of downpipes and ventilation ducts may undergo slight variations during the execution of the work due to technical, legal or municipal requirements. Some door swings and the distribution of sanitary appliances on the kitchen may undergo some variation. The overhang of the kitchen counter tops is in the choice of custom specifications. The furniture is merely informative and the materials will be those represented in the specifications.

