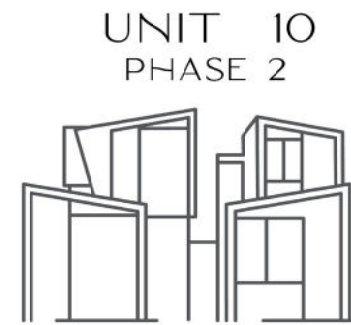


SITE



UNIT 10
PHASE 2

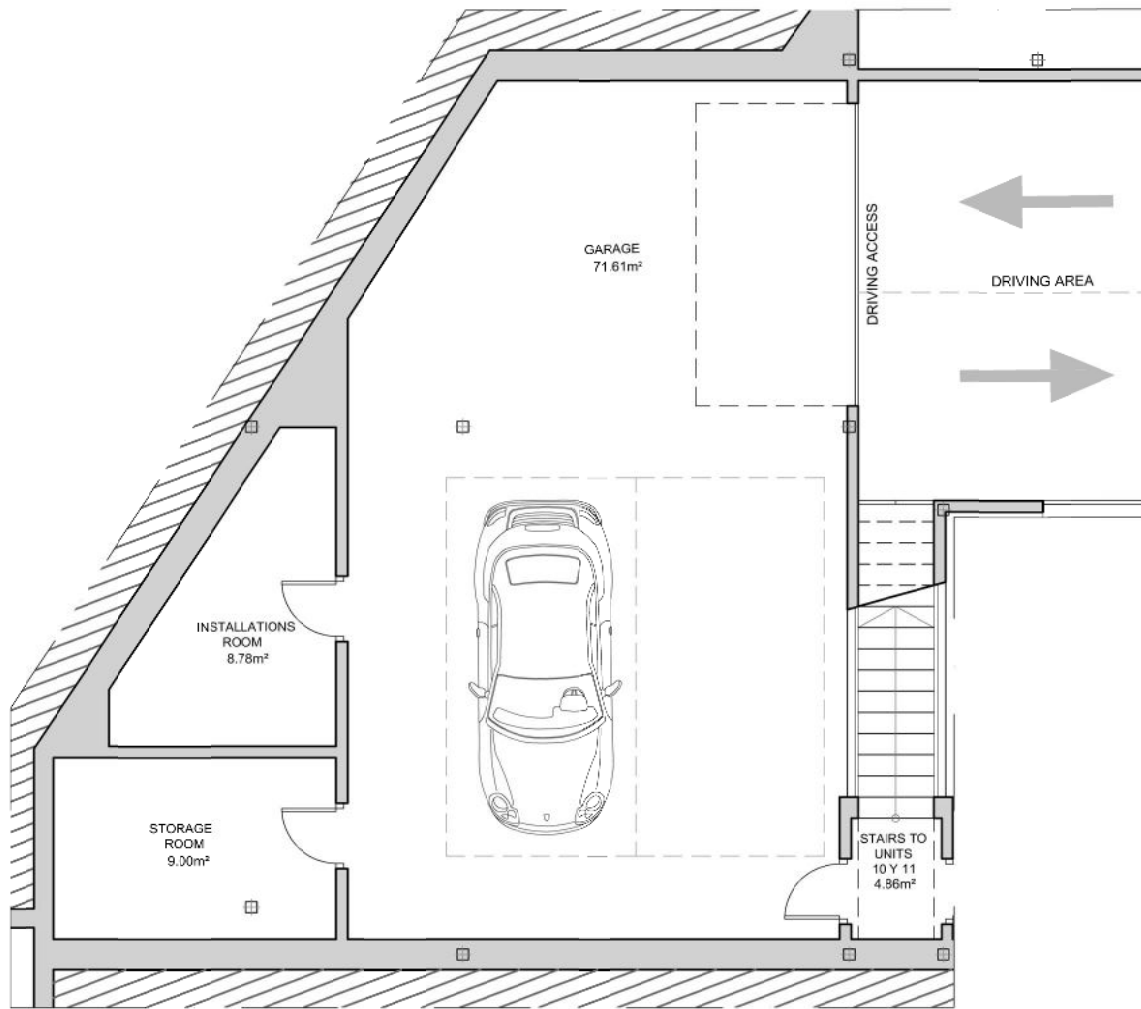
PINE VALLEY VILLAS
BY RH PRIVÉ

Urb. Reserva del Higuero
Avda. del Higuero S/N - Complejo Rivera
Casa Nº1 - 29639 Benalmádena (Málaga)
Tel. (+34) 952 569 094
Mvl. (+34) 669 404 390
ventas@reservadelhigueronprive.com
www.reservadelhigueronprive.com

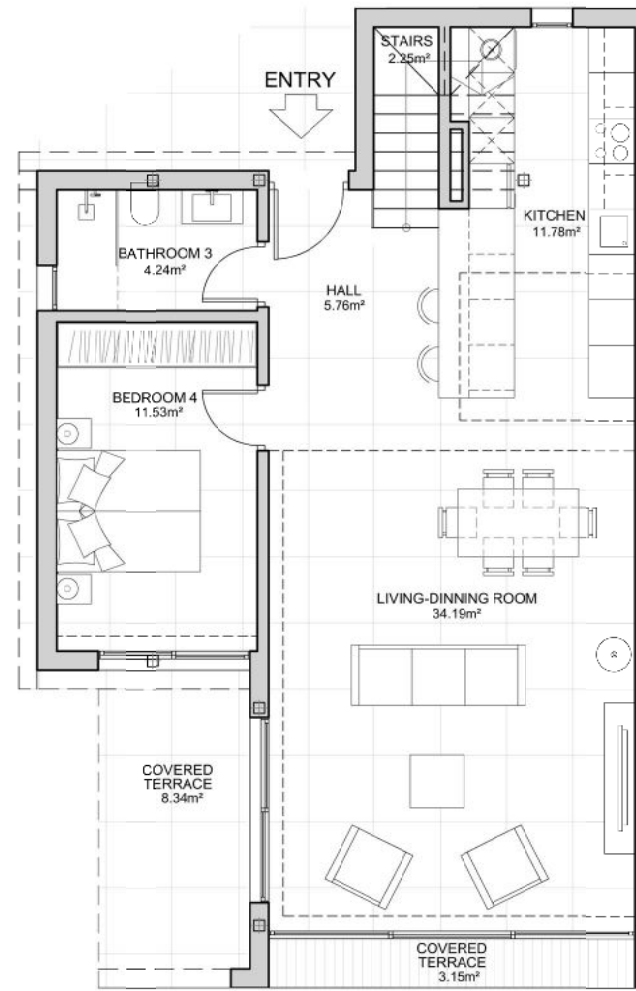
UNIT	TYPOLOGY	LEVEL			TERRACE	GARDEN	SWIMMING POOL AREA	TOTAL BUILT-UP AREA
		BASEMENT	GROUND FLOOR	TOP FLOOR				
10	CORNER	104,09	81,25	61,05	86	80,89	23,24	436,52

The expressed surfaces, the dimensioning of pillars, the situation of downpipes and ventilation ducts may undergo slight variations during the execution of the work due to technical, legal or municipal requirements. Some door swings and the distribution of sanitary appliances in the kitchen may undergo some variation. The overhang of the kitchen counter tops is in the choice of custom specifications. The furniture is merely informative and the materials will be those represented in the specifications.

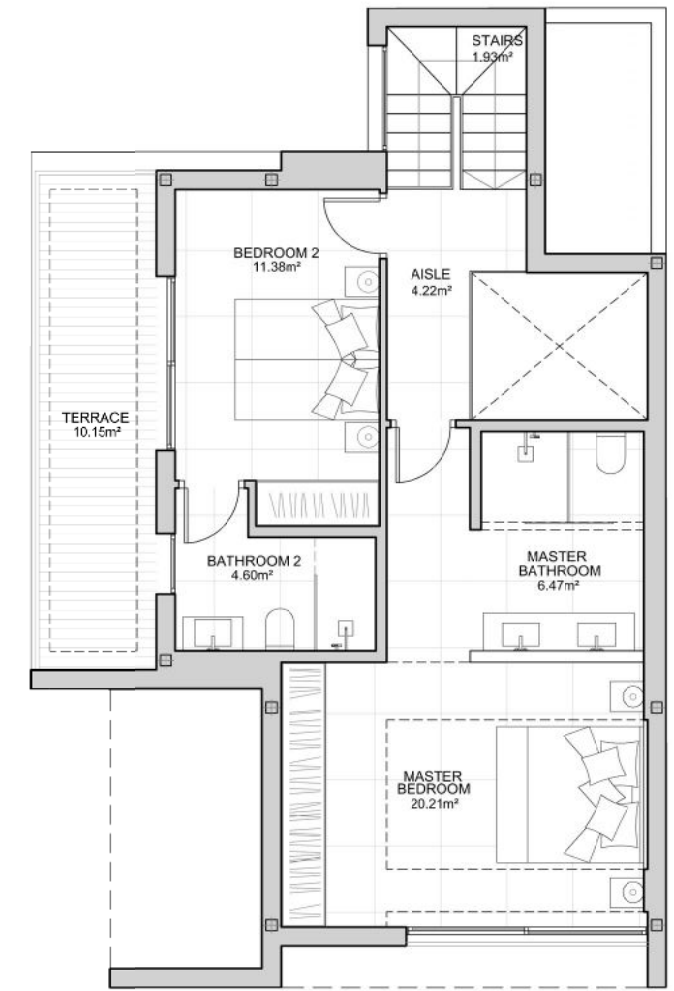




PARKING AND STORAGE ROOM

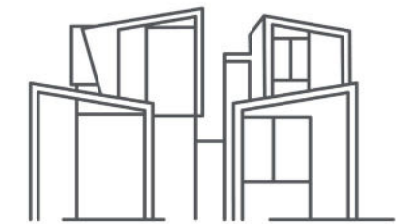


GROUND FLOOR



TOP FLOOR

UNIT 10
PHASE 2



PINE VALLEY VILLAS

BY RH PRIVÉ

Urb. Reserva del Higuero
Avda. del Higuero S/N - Complejo Rivera
Casa Nº1 - 29639 Benalmádena (Málaga)

Tel. (+34) 952 569 094

Mvl. (+34) 669 404 390

ventas@reservadelhigueronprive.com

www.reservadelhigueronprive.com

UNIT	TYPOLOGY	LEVEL			TERRACE	GARDEN	SWIMMING POOL AREA	TOTAL BUILT-UP AREA
		BASEMENT	GROUND FLOOR	TOP FLOOR				
10	CORNER	104,09	81,25	61,05	86	80,89	23,24	436,52

The expressed surfaces, the dimensioning of pillars, the situation of downpipes and ventilation ducts may undergo slight variations during the execution of the work due to technical, legal or municipal requirements. Some door swings and the distribution of sanitary appliances in the kitchen may undergo some variation. The overhang of the kitchen counter tops is in the choice of custom specifications. The furniture is merely informative and the materials will be those represented in the specifications.

